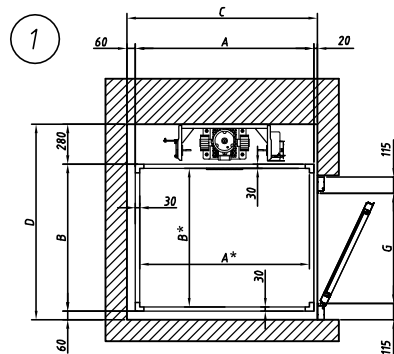
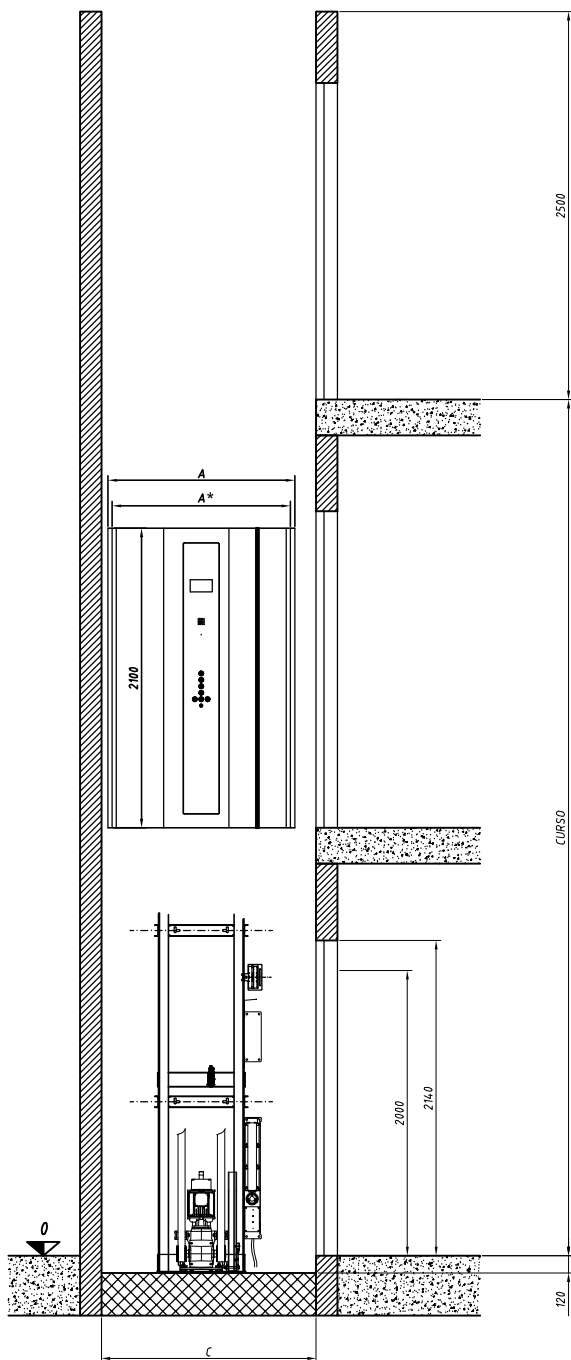
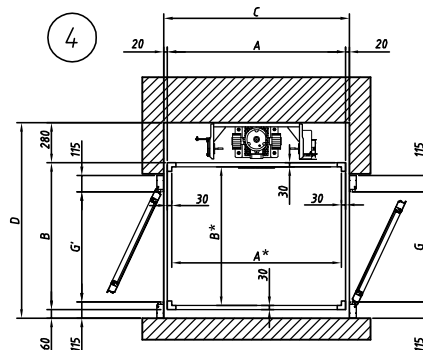


ALVENARIA COM PORTA DE BATENTE

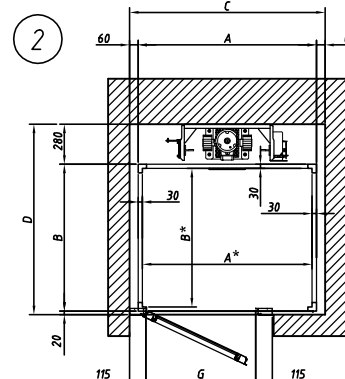


A	B	A*	B*	G	C	D
960	860	900	800	750	1040	1200
1310	860	1250	800	750	1390	1200
1310	1060	1250	1000	900	1390	1400
1460	960	1400	900	800	1540	1300
1460	1200	1400	1140	900	1540	1540

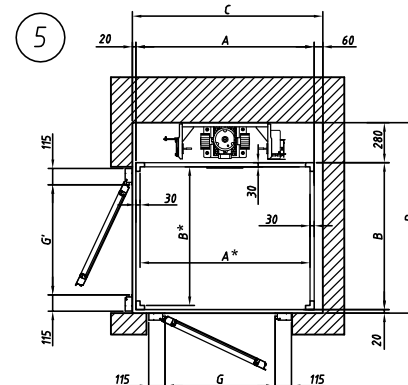


A	B	A*	B*	G - G'	C	D
960	860	900	800	750-750	1000	1200
1310	860	1250	800	750-750	1350	1200
1310	1060	1250	1000	900-900	1350	1400
1460	960	1400	900	800-800	1500	1300
1460	1200	1400	1140	900-900	1500	1540

A*	B*	A	B
1400	X	1140	1200
1000	X	1000	1060
900	X	1400	960
1100	X	1400	1160
900	X	900	960
1250	X	1000	1310
1250	X	800	1310
900	X	800	960
1400	X	900	1460
1000	X	900	1060

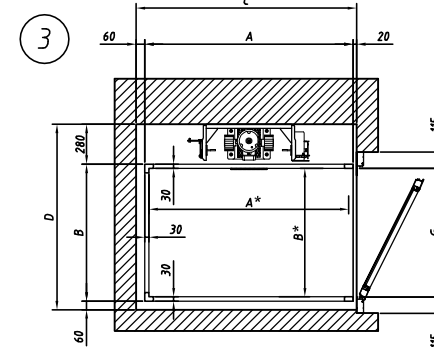


A	B	A*	B*	G	C	D
960	860	900	800	800	1080	1160
1310	860	1250	800	1000	1430	1160
1310	1060	1250	1000	1000	1430	1360
1460	960	1400	900	1000	1580	1260
1460	1200	1400	1140	1000	1580	1500

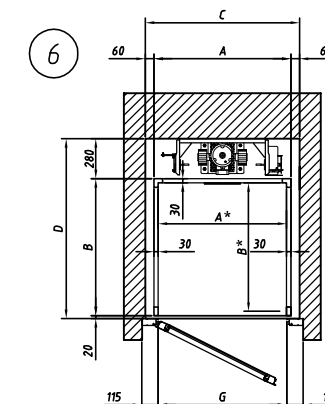


A	B	A*	B*	G - G'	C	D
960	860	900	800	800-800	1040	1160
1310	860	1250	800	1000-1000	1390	1160
1310	1060	1250	1000	1000-1000	1390	1360
1460	960	1400	900	1000-1000	1540	1260
1460	1200	1400	1140	1000-1000	1540	1500

G
650
700
750
800
860
900
950



A	B	A*	B*	G	C	D
960	860	900	800	800	1040	1200
1310	860	1250	800	800	1390	1200
1310	1060	1250	1000	1000	1390	1400
1460	960	1400	900	900	1540	1300
1460	1200	1400	1140	1000	1540	1540



A	B	A*	B*	G	C	D
960	860	900	800	900	1080	1160
1310	860	1250	800	1000	1430	1160
1310	1060	1250	1000	1000	1430	1360
1460	960	1400	900	1000	1580	1260
1460	1200	1400	1140	1000	1580	1500

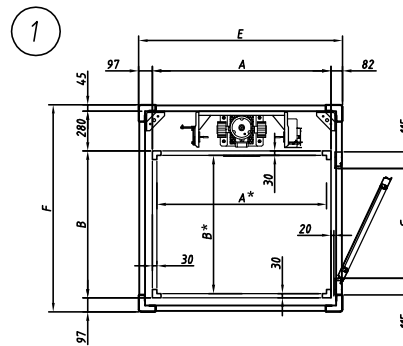
Technical drawing of a vertical machine, likely a washing machine or dryer, showing front and side views with dimensions and labels.

Dimensions:

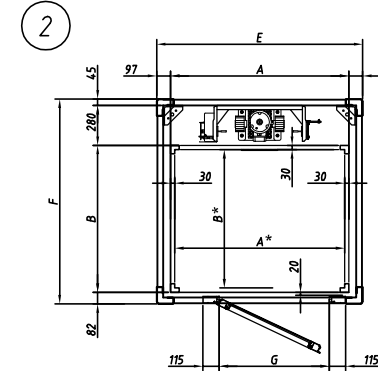
- Top width: 150
- Top right width: 150
- Top right height: 250
- Front panel height: 2100
- Front panel width: A
- Front panel width (inner): A*
- Side panel height: 2140
- Side panel height (lower section): 2000
- Bottom width: E
- Bottom right height: 140

Labels:

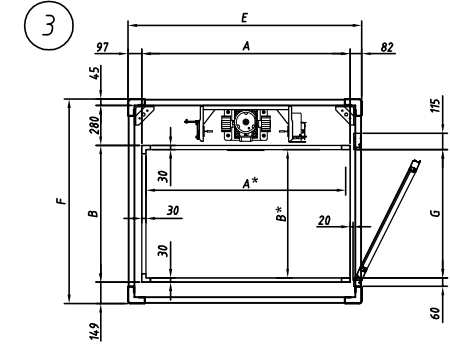
- 0 (with arrow pointing down)
- CURSO



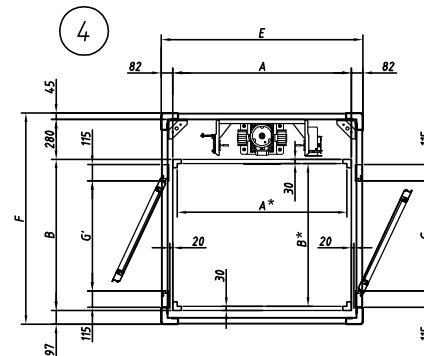
A	B	A*	B*	G	E	F
960	860	900	800	750	1140	1280
1310	860	1250	800	750	1490	1280
1310	1060	1250	1000	900	1490	1480
1460	960	1400	900	800	1640	1380
1460	1200	1400	1140	900	1640	1620



A	B	A*	B*	G	E	F
960	860	900	800	650	1154	1200
1310	860	1250	800	1000	1504	1200
1310	1060	1250	1000	1000	1504	1400
1460	960	1400	900	1000	1654	1300
1460	1200	1400	1140	1000	1654	1600



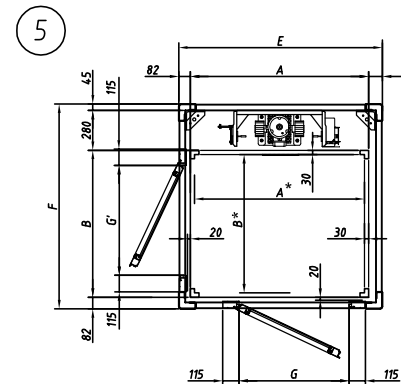
A	B	A*	B*	G	E	F
960	860	900	800	800	1140	1335
1310	860	1250	800	800	1490	1335
1310	1060	1250	1000	1000	1490	1535
1460	960	1400	900	900	1640	1435
1460	1200	1400	1140	1000	1640	1675



A	B	A*	B*	G - G'	E	F
960	860	900	800	750 - 750	1125	128
1310	860	1250	800	750 - 750	1475	128
1310	1060	1250	1000	900 - 900	1475	148
1460	960	1400	900	800 - 800	1625	138
1460	1200	1400	1140	900 - 900	1625	162

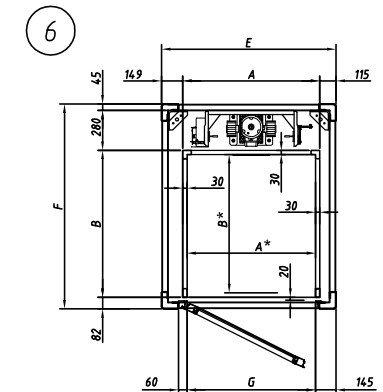
A*		B*
1400	X	1140
1000	X	1000
900	X	1400
1100	X	1400
900	X	900
1250	X	1000
1250	X	800
900	X	800
1400	X	900
1000	X	900

A		B
1460	X	1200
1060	X	1060
960	X	1460
1160	X	1460
960	X	960
1310	X	1060
1310	X	860
960	X	860
1460	X	960
1060	X	960



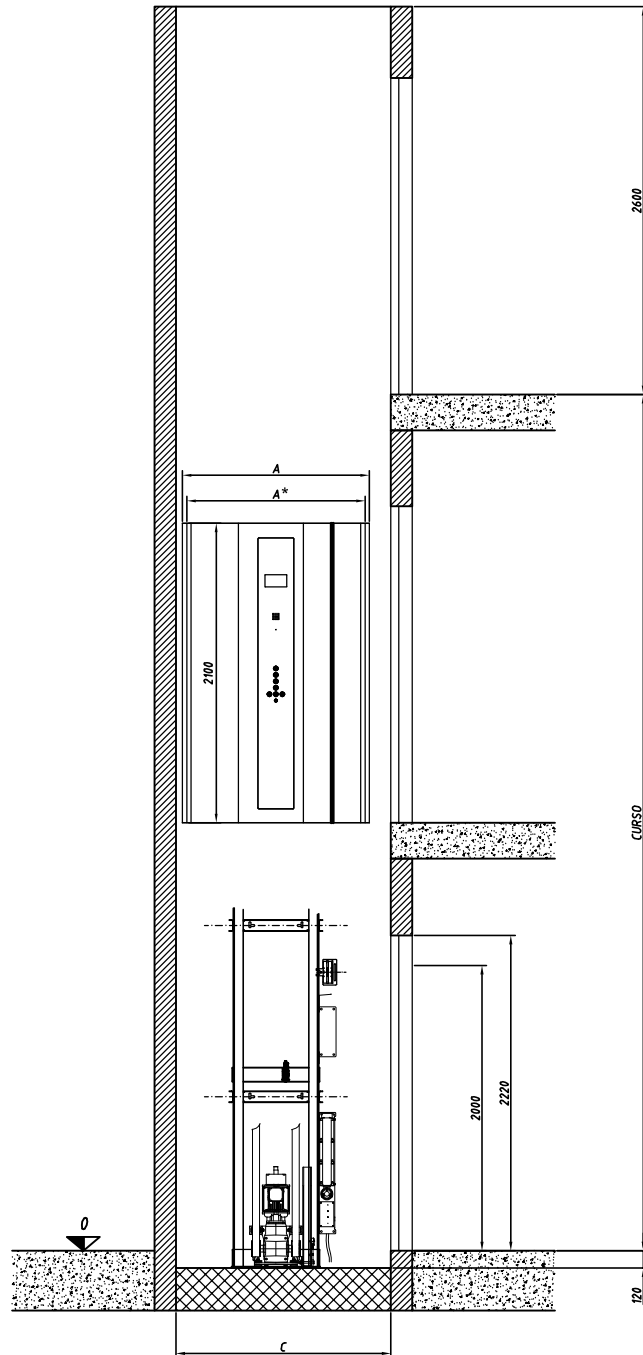
A	B	A*	B*	G - G'	E	F
960	860	900	800	650 - 750	1140	1260
1310	860	1250	800	1000 - 750	1490	1260
1310	1060	1250	1000	1000 - 900	1490	1460
1460	960	1400	900	1000 - 800	1640	1360
1460	1200	1400	1140	1000 - 900	1640	1600

G						
650	700	750	800	860	900	950

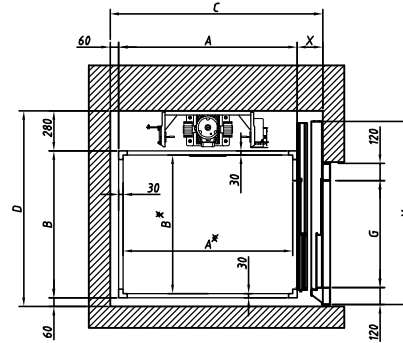


A	B	A*	B*	G	E	F
960	860	900	800	900	1225	1265
1310	860	1250	800	1000	1575	1265
1310	1060	1250	1000	1000	1575	1465
1460	960	1400	900	1000	1725	1365
1460	1200	1400	1140	1000	1725	1605

ALVENARIA COM PORTA AUTOMÁTICA "T2"

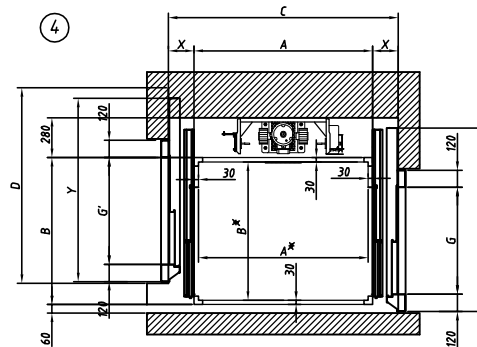


1



A	B	A*	B*	G	C	D
960	860	900	800	-	1200	1200
1310	860	1250	800	-	1550	1200
1310	1060	1250	1000	800	1550	1430
1460	960	1400	900	750	1700	1355
1460	1200	1400	1140	900	1700	1580

4



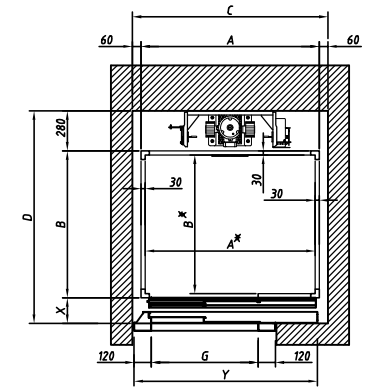
A	B	A*	B*	G - G'	C	D
960	860	900	800	* - *	1320	1200
1310	860	1250	800	* - *	1670	1200
1310	1060	1250	1000	800 - 800	1670	1430
1460	960	1400	900	750 - 750	1820	1355
1460	1200	1400	1140	900 - 900	1820	1580

A*	B*	A	B
1400	X	1140	1460
1000	X	1000	1060
900	X	1400	960
1100	X	1400	1160
900	X	900	960
1250	X	1000	1310
1250	X	800	1310
900	X	800	960
1400	X	900	1460
1000	X	900	1060

	G			
	700	750	800	900
Y (T2)	1265	1340	1415	1565
Y (T3)	1145	1215	1280	1415

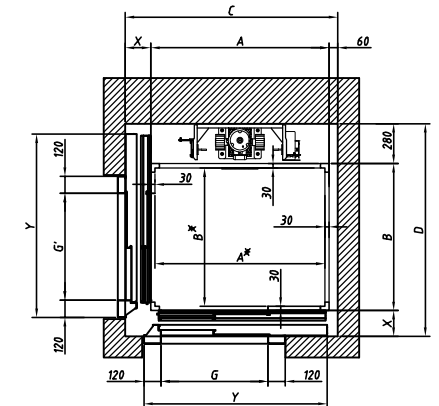
X (T2) = 180

2



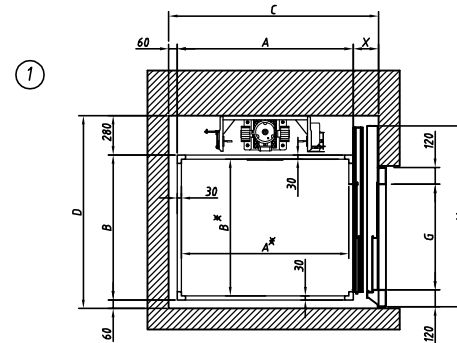
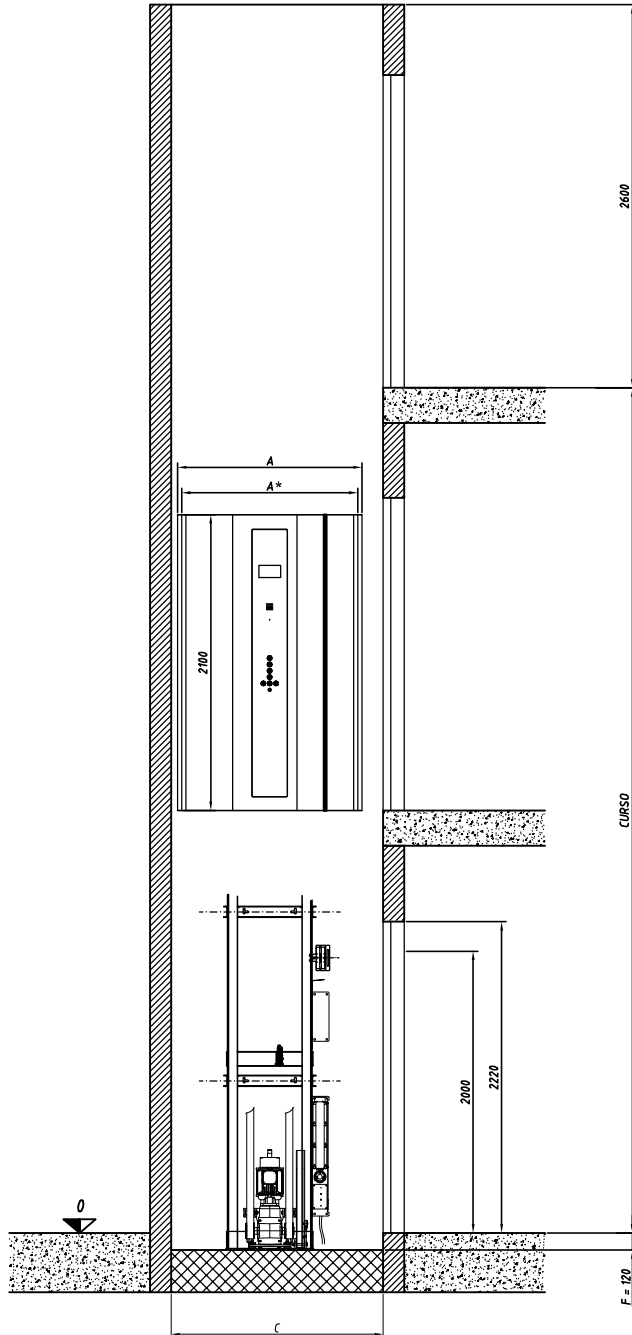
A	B	A*	B*	G	C	D
960	860	900	800	-	1080	1320
1310	860	1250	800	800	1430	1320
1310	1060	1250	1000	800	1430	1520
1460	960	1400	900	900	1580	1420
1460	1200	1400	1140	900	1580	1660

5

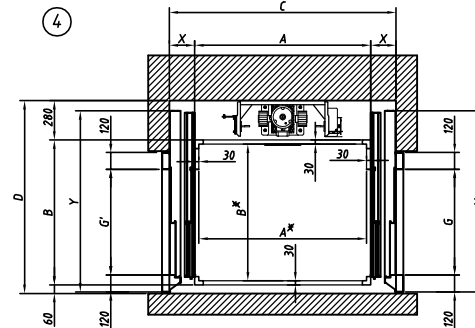


A	B	A*	B*	G - G'	C	D
960	860	900	800	-	1200	1320
1310	860	1250	800	800 - *	1550	1320
1310	1060	1250	1000	800 - 800	1550	1520
1460	960	1400	900	900 - 750	1700	1420
1460	1200	1400	1140	900 - 900	1700	1660

ALVENARIA COM PORTA AUTOMÁTICA "T3"



A	B	A*	B*	G	C	D
960	860	900	800	750	1235	1200
1310	860	1250	800	750	1585	1200
1310	1060	1250	1000	900	1585	1400
1460	960	1400	900	800	1735	1300
1460	1200	1400	1140	900	1735	1540

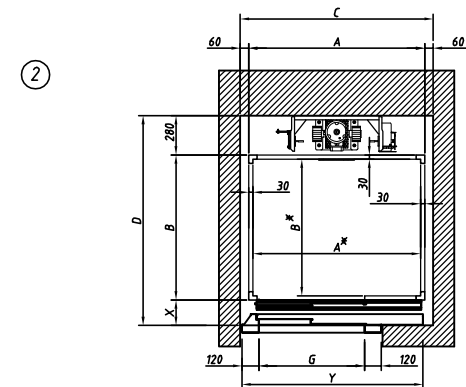


A	B	A*	B*	G - G'	C	D
960	860	900	800	750 - 750	1390	1200
1310	860	1250	800	750 - 750	1740	1200
1310	1060	1250	1000	900 - 900	1740	1400
1460	960	1400	900	800 - 800	1890	1300
1460	1200	1400	1140	900 - 900	1890	1540

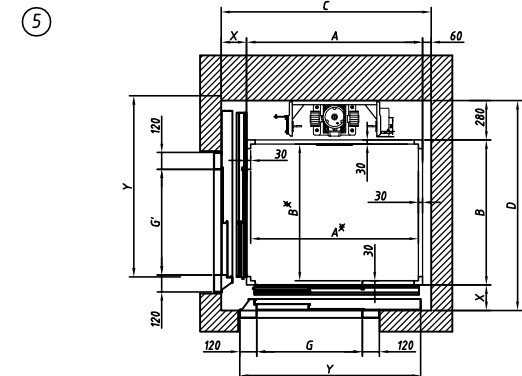
A*	B*	A	B
1400	X	1140	1460
1000	X	1060	1060
900	X	960	960
1100	X	1160	1160
900	X	960	960
1250	X	1310	1060
1250	X	1310	860
900	X	960	860
1400	X	1460	960
1000	X	1060	960

	G			
	700	750	800	900
Y (T2)	1265	1340	1415	1565
Y (T3)	1145	1215	1280	1415

X (T3) = 215

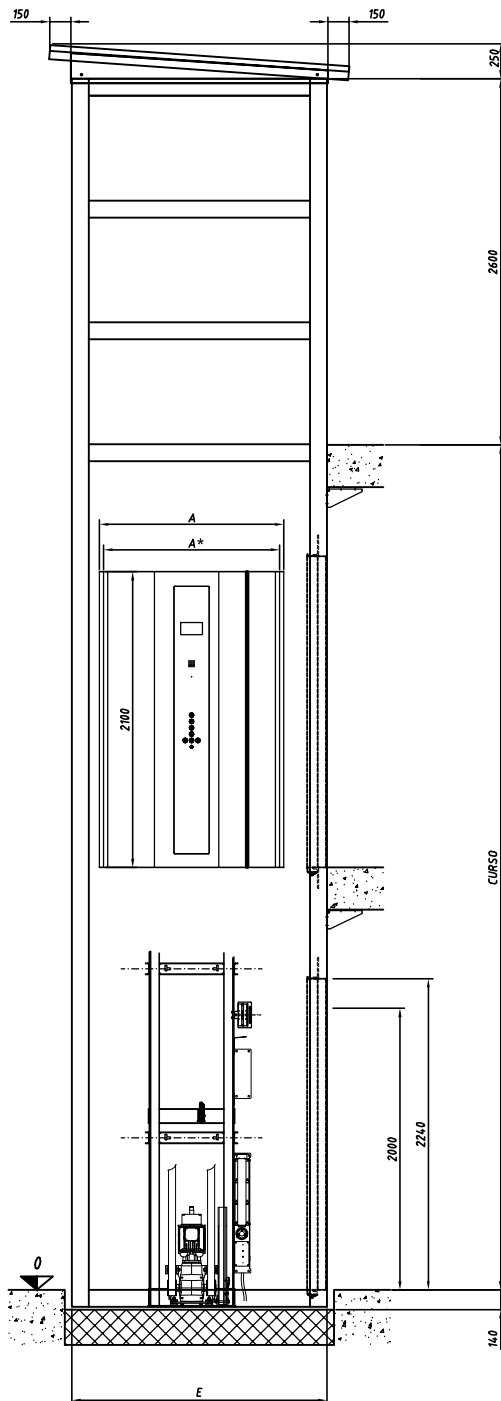


A	B	A*	B*	G	C	D
960	860	900	800	-	1080	1355
1310	860	1250	800	900	1430	1355
1310	1060	1250	1000	900	1430	1555
1460	960	1400	900	900	1580	1455
1460	1200	1400	1140	900	1580	1695

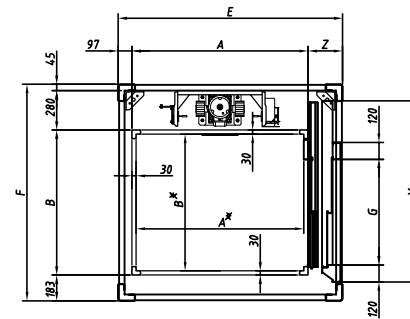


A	B	A*	B*	G - G'	C	D
960	860	900	800	* - 750	1235	1355
1310	860	1250	800	900 - 750	1585	1355
1310	1060	1250	1000	900 - 900	1585	1555
1460	960	1400	900	900 - 800	1735	1455
1460	1200	1400	1140	900 - 900	1735	1695

ESTRUTURA COM PORTA AUTOMÁTICA "T2"

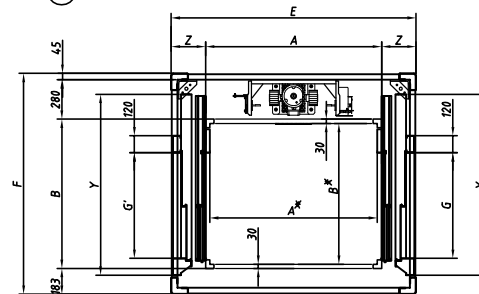


1



A	B	A*	B*	G	E	F
960	860	900	800	-	1300	1370
1310	860	1250	800	-	1650	1370
1310	1060	1250	1000	800	1650	1570
1460	960	1400	900	750	1800	1470
1460	1200	1400	1140	900	1800	1710

4



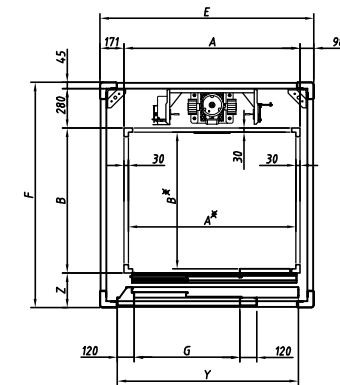
A	B	A*	B*	G - G'	E	F
960	860	900	800	-	1450	1370
1310	860	1250	800	-	1800	1370
1310	1060	1250	1000	800 - 800	1800	1570
1460	960	1400	900	750 - 750	1950	1470
1460	1200	1400	1140	900 - 900	1950	1710

A*	B*	A	B
1400	X 1140	1460	X 1200
1000	X 1000	1060	X 1060
900	X 1400	960	X 1460
1100	X 1400	1160	X 1460
900	X 900	960	X 960
1250	X 1000	1310	X 1060
1250	X 800	1310	X 860
900	X 800	960	X 860
1400	X 900	1460	X 960
1000	X 900	1060	X 960

G			
700	750	800	900
Y (T2)	1265	1340	1415
Y (T3)	1145	1215	1280

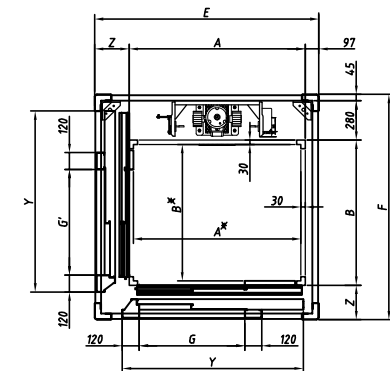
Z (T2) = 245

2



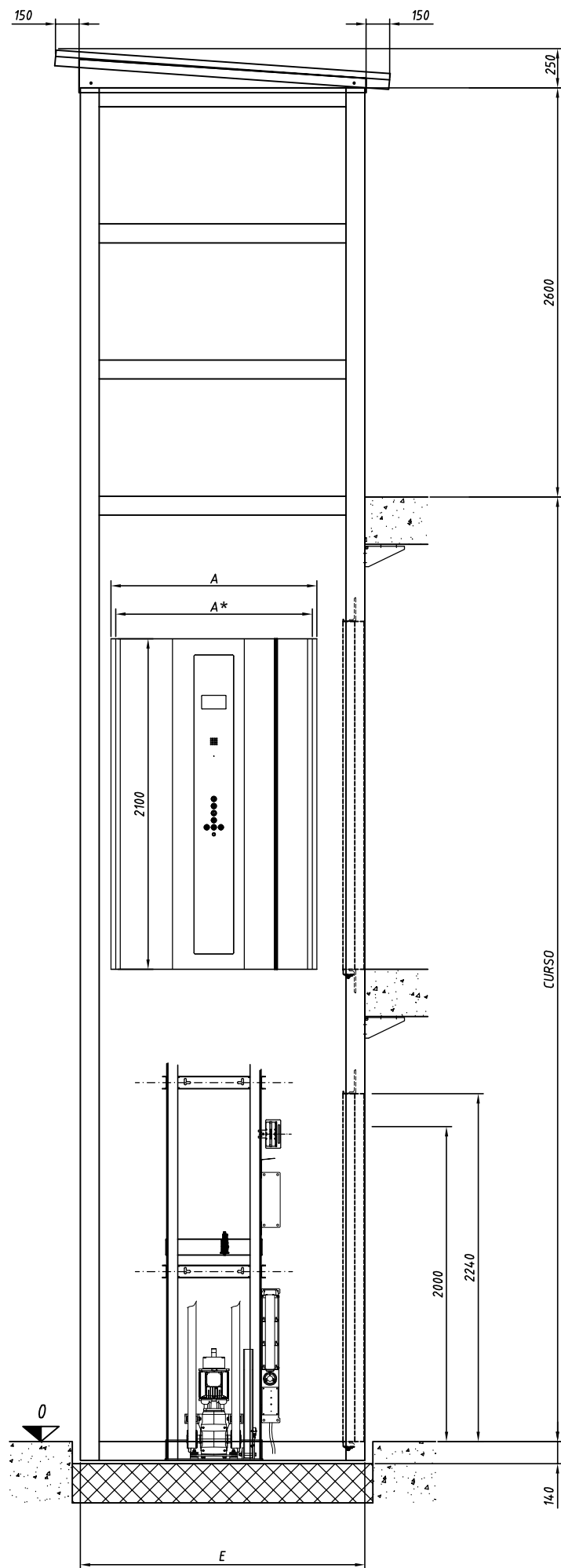
A	B	A*	B*	G	E	F
960	860	900	800	-	1230	1430
1310	860	1250	800	800	1580	1430
1310	1060	1250	1000	800	1580	1630
1460	960	1400	900	900	1730	1530
1460	1200	1400	1140	900	1730	1770

5

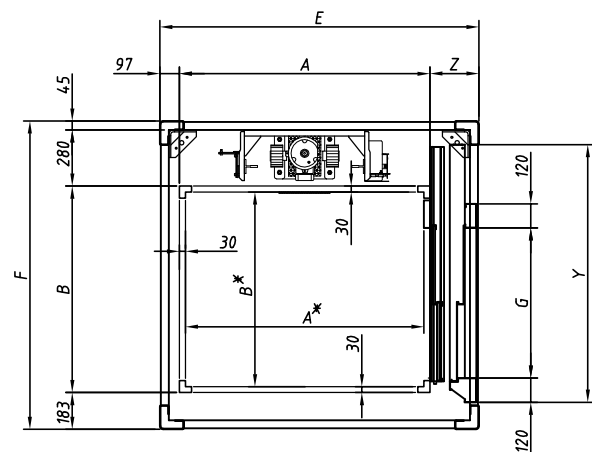


A	B	A*	B*	G - G'	E	F
960	860	900	800	* - *	1305	1430
1310	860	1250	800	800 - *	1655	1430
1310	1060	1250	1000	800 - 800	1655	1630
1460	960	1400	900	900 - 750	1805	1530
1460	1200	1400	1140	900 - 900	1805	1770

ESTRUTURA COM PORTA AUTOMÁTICA "T3"

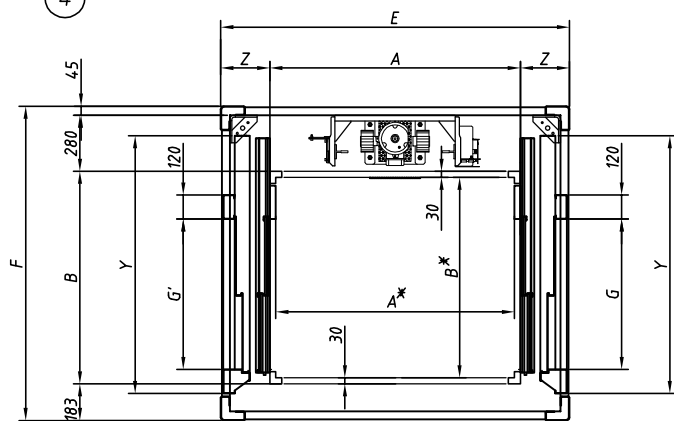


1



A	B	A*	B*	G	E	F
960	860	900	800	750	1335	1370
1310	860	1250	800	750	1685	1370
1310	1060	1250	1000	900	1685	1570
1460	960	1400	900	800	1835	1470
1460	1200	1400	1140	900	1835	1710

4



A	B	A*	B*	G - G'	E	F
960	860	900	800	750 - 750	1520	1370
1310	860	1250	800	750 - 750	1870	1370
1310	1060	1250	1000	900 - 900	1870	1570
1460	960	1400	900	800 - 800	2020	1470
1460	1200	1400	1140	900 - 900	2020	1710

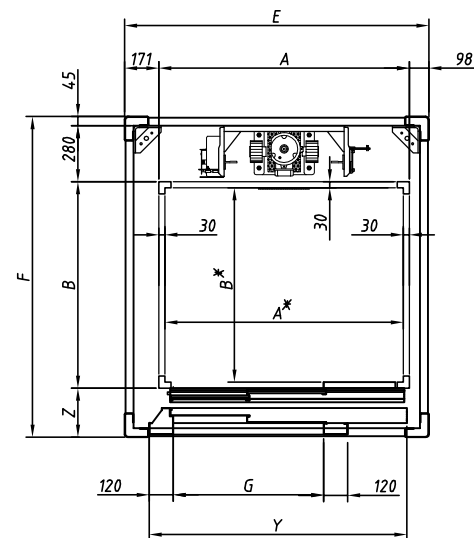
A*	B*
1400	X 1140
1000	X 1000
900	X 1400
1100	X 1400
900	X 900
1250	X 1000
1250	X 800
900	X 800
1400	X 900
1000	X 900

A	B
1460	X 1200
1060	X 1060
960	X 1460
1160	X 1460
960	X 960
1310	X 1060
1310	X 860
960	X 860
1460	X 960
1060	X 960

	G			
	700	750	800	900
Y (T2)	1265	1340	1415	1565
Y (T3)	1145	1215	1280	1415

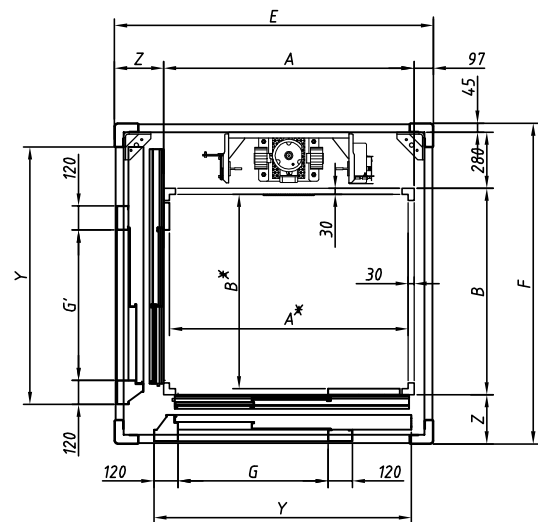
Z (T3) = 280

2



A	B	A*	B*	G	E	F
960	860	900	800	-	1230	1465
1310	860	1250	800	900	1580	1465
1310	1060	1250	1000	900	1580	1665
1460	960	1400	900	900	1730	1565
1460	1200	1400	1140	900	1730	1805

5



A	B	A*	B*	G - G'	E	F
960	860	900	800	* - *	1340	1465
1310	860	1250	800	900 - 800	1690	1465
1310	1060	1250	1000	900 - 900	1690	1665
1460	960	1400	900	900 - 800	1840	1565
1460	1200	1400	1140	900 - 900	1840	1805